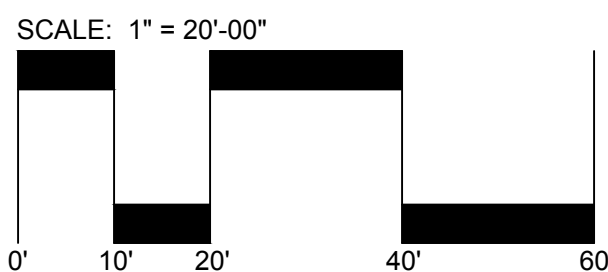


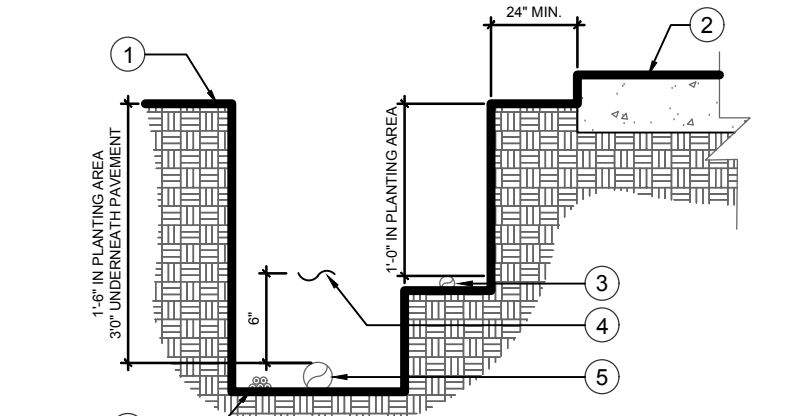
Gateway Drive (S.W. 14th Street)

NORTH

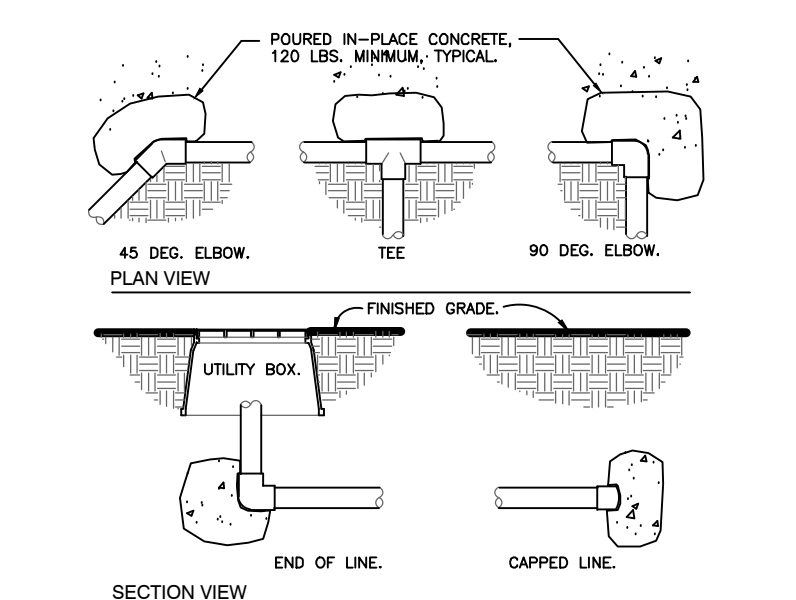
NORTH



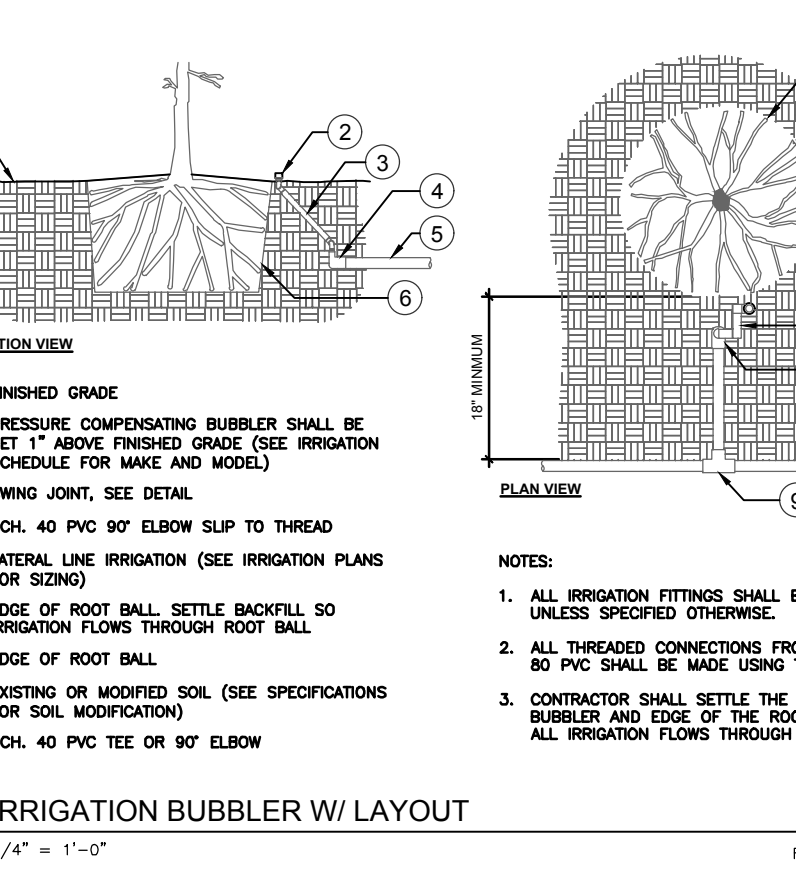
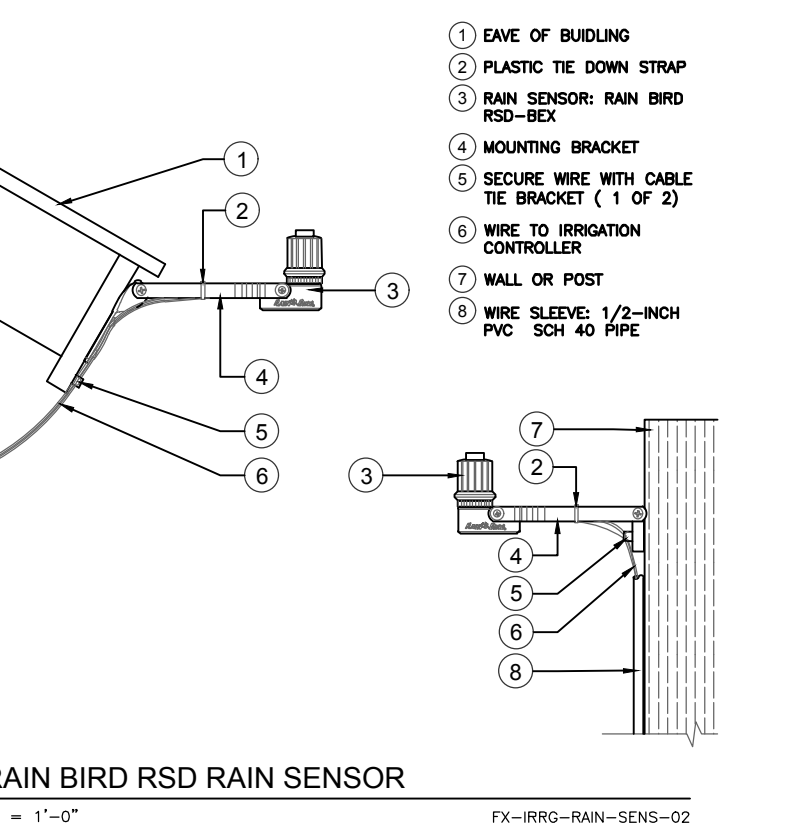
SLEEVING SCHEDULE	
PIPE SIZE	SLEEVING PIPE SIZE
3/4"	2"
1"	2"
1-1/4"	3"
1-1/2"	3"
2"	4"
3"	6"
4"	8"
6"	12"
8"	16"



- NOTES:
- SEE IRRIGATION LEGEND FOR MAINLINE AND LATERAL LINE PIPE SIZE AND TYPE.
 - DIRECT BURIAL CONTROL WIRES SHALL BE INSTALLED IN SCH. 40 PVC ELECTRICAL CONDUIT IF REQUIRED.
 - 2-WIRE IRRIGATION WIRE SHALL BE INSTALLED IN SCH. 40 PVC ELECTRICAL CONDUIT.
 - DETECTABLE LOCATOR TAPE SHALL BE LOCATED SIX INCHES (6") ABOVE THE ENTIRE MAINLINE RUN.
- 1 IRRIGATION TRENCHING
1 1/2" = 1'-0"
- FX-IRRQ-FX-AUXED-08



- 2 THRUST BLOCKING
3/4" = 1'-0"
- SLEEVE SIZE PER PLAN (SST MIN. DEPTH)
 - TAPE END OF SLEEVE
 - PVC SCHEDULE 40 ELL
 - PVC SCHEDULE 40 CAP
 - LATERAL PIPE STUBBED UP
 - FINISH GRADE
 - CURB, EDGE OF ROADWAY, OR HARDSCAPE SURFACE
- 3 PIPE SLEEVING
1" = 1'-0"
- 32 8409.76-01
- 328409.76-32



IRRIGATION SCHEDULE			
SYMBOL	MANUFACTURER/MODEL/DESCRIPTION	QTY	PSI
Q T H F	RAIN BIRD 1806-SAM 8 SERIES MPR TURF SPRAY 6.0" POP-UP SPRINKLER WITH CO-MOLDED WIPER SEAL. 1/2" NPT FEMALE THREADED INLET. WITH SEAL-A-MATIC CHECK VALVE.	15	30
Q T H F	RAIN BIRD 1806-SAM 10 SERIES MPR TURF SPRAY 6.0" POP-UP SPRINKLER WITH CO-MOLDED WIPER SEAL. 1/2" NPT FEMALE THREADED INLET. WITH SEAL-A-MATIC CHECK VALVE.	14	30
Q T H F	RAIN BIRD 1806-SAM 12 SERIES MPR TURF SPRAY 6.0" POP-UP SPRINKLER WITH CO-MOLDED WIPER SEAL. 1/2" NPT FEMALE THREADED INLET. WITH SEAL-A-MATIC CHECK VALVE.	12	30
Q T H F	RAIN BIRD 1806-SAM 15 SERIES MPR TURF SPRAY 6.0" POP-UP SPRINKLER WITH CO-MOLDED WIPER SEAL. 1/2" NPT FEMALE THREADED INLET. WITH SEAL-A-MATIC CHECK VALVE.	2	30
Q T H F	RAIN BIRD 1806-SAM ADJ TURF SPRAY 6.0" POP-UP SPRINKLER WITH CO-MOLDED WIPER SEAL. 1/2" NPT FEMALE THREADED INLET. WITH SEAL-A-MATIC CHECK VALVE.	26	30
Q T H F	RAIN BIRD 1806-SAM ADJ TURF SPRAY 6.0" POP-UP SPRINKLER WITH CO-MOLDED WIPER SEAL. 1/2" NPT FEMALE THREADED INLET. WITH SEAL-A-MATIC CHECK VALVE.	6	30
Q T H F	RAIN BIRD 1812-SAM-PRS 5 SERIES MPR SHRUB SPRAY 12.0" POP-UP SPRINKLER WITH CO-MOLDED WIPER SEAL. 1/2" NPT FEMALE THREADED INLET. WITH SEAL-A-MATIC CHECK VALVE, AND PRESSURE REGULATING DEVICE.	2	30
Q T H F	RAIN BIRD 1812-SAM-PRS 8 SERIES MPR SHRUB SPRAY 12.0" POP-UP SPRINKLER WITH CO-MOLDED WIPER SEAL. 1/2" NPT FEMALE THREADED INLET. WITH SEAL-A-MATIC CHECK VALVE, AND PRESSURE REGULATING DEVICE.	5	30
Q T H F	RAIN BIRD 1812-SAM-PRS 10 SERIES MPR SHRUB SPRAY 12.0" POP-UP SPRINKLER WITH CO-MOLDED WIPER SEAL. 1/2" NPT FEMALE THREADED INLET. WITH SEAL-A-MATIC CHECK VALVE, AND PRESSURE REGULATING DEVICE.	2	30
Q T H F	RAIN BIRD 1812-SAM-PRS ADJ SHRUB SPRAY 12.0" POP-UP SPRINKLER WITH CO-MOLDED WIPER SEAL. 1/2" NPT FEMALE THREADED INLET. WITH SEAL-A-MATIC CHECK VALVE, AND PRESSURE REGULATING DEVICE.	27	30
Q T H F	RAIN BIRD 1812-SAM-PRS ADJ SHRUB SPRAY 12.0" POP-UP SPRINKLER WITH CO-MOLDED WIPER SEAL. 1/2" NPT FEMALE THREADED INLET. WITH SEAL-A-MATIC CHECK VALVE, AND PRESSURE REGULATING DEVICE.	9	30
Q T H F	RAIN BIRD 1806-SAM-RU SQ SERIES SHRUB SPRAY, 6IN. POP-UP SPRINKLER WITH CO-MOLDED WIPER SEAL. 1/2IN. NPT FEMALE THREADED INLET ON FIXED RISER. WITH SEAL-A-MATIC CHECK VALVE.	32	30
Q T H F	RAIN BIRD 1806-SAM-RU US SERIES SHRUB SPRAY, 6IN. POP-UP SPRINKLER WITH CO-MOLDED WIPER SEAL. 1/2IN. NPT FEMALE THREADED INLET ON FIXED RISER. WITH SEAL-A-MATIC CHECK VALVE.	16	30
Q T H F	RAIN BIRD 1806-SAM-RU HE-VAN SERIES SHRUB SPRAY, 6IN. POP-UP SPRINKLER WITH CO-MOLDED WIPER SEAL. 1/2IN. NPT FEMALE THREADED INLET ON FIXED RISER. WITH SEAL-A-MATIC CHECK VALVE.	1	30
Q T H F	RAIN BIRD 1806-SAM-U 15 STRIP SERIES SHRUB SPRAY, 6IN. POP-UP SPRINKLER WITH CO-MOLDED WIPER SEAL. 1/2IN. NPT FEMALE THREADED INLET. WITH SEAL-A-MATIC CHECK VALVE.	47	30
Q T H F	RAIN BIRD 1812-SAM-PRS 5 SERIES STREAM STREAM BUBBLER 12.0" POPUP WITH CHECK VALVE AND PRESSURE REGULATOR.	25	30
Q T H F	RAIN BIRD 1806-PRS-1400 FLOOD FLOOD BUBBLER 6.0" POPUP WITH PRESSURE REGULATING DEVICE.	19	30
SYMBOL	MANUFACTURER/MODEL/DESCRIPTION	QTY	
Q T H F	RAIN BIRD PEB-PRS-D (1IN., 1-1/2IN., 2IN. PLASTIC INDUSTRIAL REMOTE CONTROL VALVE. LOW FLOW OPERATING CAPABILITY, GLOBE CONFIGURATION, WITH PRESSURE REGULATOR MODULE.	6	
Q T H F	LANDSCAPE PRODUCTS INC. BBV 1-1/2IN., 2IN. FULL PORT BRASS BALL VALVE.	1	
Q T H F	FEBCO 825V 1-1/2" REDUCED PRESSURE BACKFLOW PREVENTER	1	
Q T H F	RAIN BIRD ESP4ME3 WITH (2) ESP-SM3 10 STATION, HYBRID MODULAR OUTDOOR CONTROLLER. FOR RESIDENTIAL OR LIGHT COMMERCIAL USE. LNK WIFI MODULE AND FLOW SENSOR READY.	1	
Q T H F	RAIN BIRD RSD-BEX RAIN SENSOR, WITH METAL LATCHING BRACKET, EXTENSION WIRE.	1	
Q T H F	WATER METER 1-1/2" 1-1/2" CITY WATER METER	1	
Q T H F	IRRIGATION LATERAL LINE: PVC CLASS 200 SDR 21	3,139 LF	
Q T H F	IRRIGATION MAINLINE: PVC SCHEDULE 40 PVC SCHEDULE 40 IRRIGATION PIPE.	791.7 LF	
Q T H F	PIPE SLEEVE: PVC SCHEDULE 40	624.8 LF	

NOTES:

AUTOMATIC IRRIGATION SYSTEM IS EQUIPPED WITH RAIN SENSOR AND PROVIDES 100% COVERAGE WITH 50% OVERLAP FROM AN APPROVED WATER SOURCE.

MAINLINE LOCATION, WHERE SHOWN, IS FOR GRAPHIC CLARITY PURPOSES ONLY. INSTALL AT THE BACK OF CURB, FRONT OF WALK, BACK OF WALK, OR ADJACENT TO OTHER HARDSCAPES TO FACILITATE FUTURE LOCATION AND TO PROTECT FROM DAMAGE. ENSURE MAINLINE IS INSTALLED ACCORDING TO IRRIGATION SPECIFICATIONS AND DETAILS.

INSTALL DIRECT BURIAL CONTROL WIRE ADJACENT TO MAINLINE FROM CONTROLLER TO VALVES. USE 2" CONDUIT FOR CONTROL WIRE UNDER PAVEMENT.

ONLY PIPE SLEEVES LOCATED WITHIN VEHICULAR USE AREAS HAVE SIZES THAT ARE LABELED. FOR ALL OTHER PIPE SLEEVES REFER TO SLEEVING SCHEDULE.

IRRIGATION IS SEPARATED INTO THREE HYDROZONES: SHRUBS (LOW WATER USE); TURF (MODERATE WATER USE); & BUBBLERS (HIGH WATER USE).

ALL NEWLY INSTALLED TREES AND PALMS SHALL HAVE BUBBLERS.

IRRIGATION SYSTEM UTILIZES PRESSURE REGULATING VALVES & ALL SPRINKLER HEADS ARE EQUIPPED WITH CHECK VALVES.